



Friday Flyer 2023

Dear Walter Families,

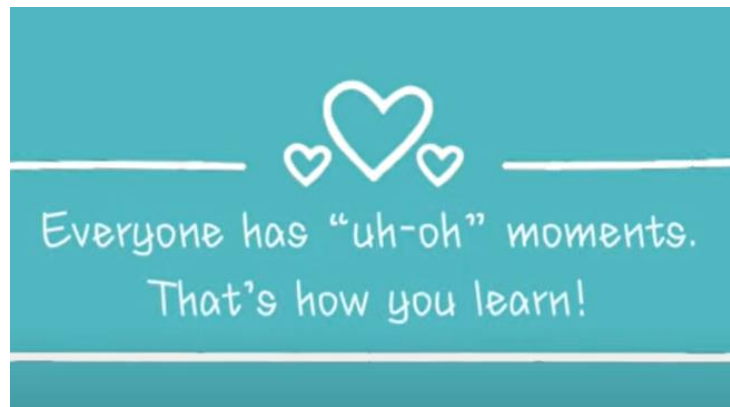
Welcome Back to the Spring Term 2023 and Happy New Year; this chap is delighted to be back at school!



New Year Resolutions 2023



Today we all talked about making New Year Resolutions; I shared with the children that I was going to learn from my mistakes. Please reinforce with your children that it is okay to have accidents or to make mistakes, as that is how we learn. We called them Uh-Oh moments.



Infant to Junior Place

We would like to remind you, if you have not already done so, of the closing date for applications is on 15th January 2023.

Please find below a link to the Wokingham Borough Council website which will give details on how you can apply for an Infant/Primary School place for September 2023.

The closing date is 15th January 2023.

<https://www.wokingham.gov.uk/schools-and-education/school-admissions/starting-infant-or-primary-school-ages-4-5/>

The closing date for F1 (Robin) places is also on the 15th January so please ensure you have your applications into our school office in good time as we will be allocating both 15 and 30 hour places.

Chat Health Social Media

I have received information from Wokingham Borough Council (WBC) about the Chat Health Social Media Initiative. Chat Health is a confidential & anonymous text messaging service for parents/carers and young people.

It is run by WBC Specialist Community Public Health Nurses, Health Visitors & School Nurses within their team.

[School Nursing | Children Young People and Families Online Resource \(berkshirehealthcare.nhs.uk\)](https://www.berkshirehealthcare.nhs.uk/school-nursing/)

Please help us get the message out. Click on the links below for use in your communication

[ChatHealth 0 - 5](#)

[ChatHealth 5 - 19](#)

[ChatHealth 11 - 19](#)

ChatHealth Berkshire Healthcare Children, Young People and Families services

Do you have a child aged 0 - 5?
If you could do with some advice or support, we can help with all kinds of things like:

- Breastfeeding and bottle feeding
- Child development
- Toileting
- Their health
- Behaviour
- Parenting
- Food and nutrition
- Sleep
- Emotional health & wellbeing
- Bullying

Text the Health Visiting Service in confidence
07312 263283

ChatHealth Berkshire Healthcare Children, Young People and Families services

Do you have a 5-19 year old?
If you could do with some advice or support, we can help with all kinds of things like:

- Dealing with medical conditions in school
- Healthy eating
- Bedwetting
- Behaviour
- Parenting
- Sleep
- Emotional health & wellbeing
- Bullying

Text a school nurse in confidence
07312 263194

Upcoming Dates to Remember

Monday 30th January is the start of our Maths Week!

Friday February 3rd 2023 is NSPCC National Number Day when the children can donate £1 to the NSPCC and come wearing clothes with numbers on. This has always been a really fun day.

Friday 10th February is the PTA Bake Sale.

Friday 3rd March ~ World Book Day. We would like the children to come to school dressed in their Pyjama's ready to share some of the staff's favourite bedtime stories. We do not to impose any additional expense on families to provide a costume for their child.

Friday 24th March 2023 will be a fundraising event for school: the much requested Break the Rules Day!

Wednesday 29th March Parent Consultations

Friday 31st March School Closed for Parent Consultations.

Children's Mental Health Week

Children's Mental Health Week begins on **6th February 2022**. Mrs Bell will be organising a week of activities to promote and foster good Mental Health including Superhero Mindfulness. **Friday 10th February** will be Dress to Express Day; we would like the children (and staff) to come to school in an outfit that tells us something about who they are! They could wear their favourite colour, their favourite clothes, a colour to reflect how they feel or even their favourite fancy dress costume!



The theme this year is **Let's Connect:**



According to Place2Be; human beings thrive in communities, and this connection is vital for our well-being and our survival. When we have healthy connections to family, friends and others it can support our mental health and our sense of well-being. When our need for rewarding social connections is not met, we can sometimes feel isolated and lonely, which can have a negative impact on our mental health.

Let's Connect is about making meaningful connections for all, during Children's Mental Health Week, and beyond.

For Children's Mental Health Week we will be encouraging people to connect with others in healthy, rewarding and meaningful ways.

We will not be collecting money for Place2Be BUT we would very much welcome a contribution of £2.25 per child towards the cost of the Mindfulness training if you are able to.

School Council Elections will take place in the week beginning **Monday 13th February 2022**.

Food Vouchers, Fuel Vouchers and Walter's Pantry

If you require food or fuel vouchers at any time, please contact Mrs Janes in the school office either face to face, by phone or by email at: admin@walter.wokingham.sch.uk



We have fully stocked Walter's Pantry with cereal and long-life milk as well as plenty of food to make hot meals that can be cooked on the hob. Please ask in the office at any time.



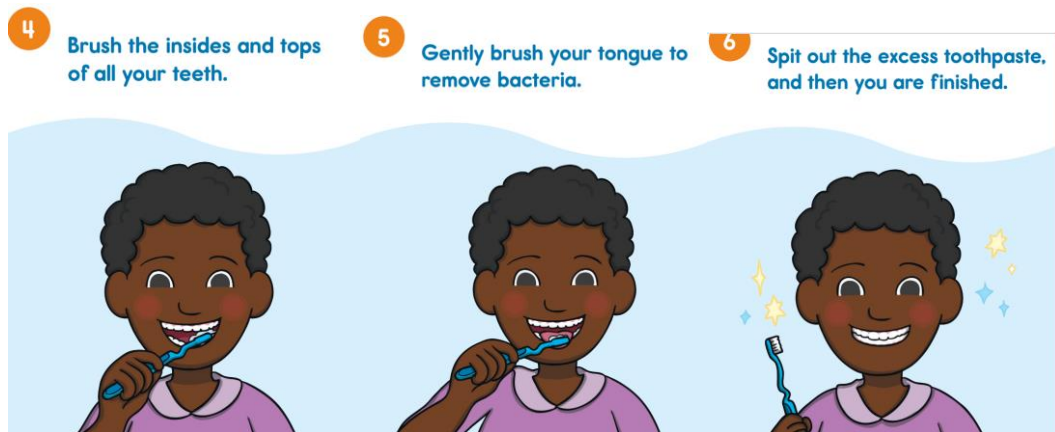
Toothpaste and Toothbrushes

Mrs Bell has made us all aware that a leading children's doctor has said that due to the Cost of Living Crisis, toothbrushes and toothpaste have become luxury items for some families. She has bought a stock of toothbrushes and toothpaste for anyone in our school who cannot afford to provide them for the families at the moment. We also have shower gel. As always contact Mrs Janes or Mrs Hemmings in strictest confidence.

How To Brush Your Teeth

- 1** Squeeze a pea-sized amount of toothpaste onto the brush.
- 2** Tilt your toothbrush, covering your gumline and front of your teeth, and brush gently.
- 3** Gently brush the outside of your teeth, making sure you reach the back of your teeth.

The illustration shows a young girl with brown hair in pigtails, wearing a blue school uniform, brushing her teeth. The first panel shows her holding a toothbrush with a pea-sized amount of toothpaste on it. The second panel shows her tilting the brush to brush the gumline. The third panel shows her brushing the back of her teeth.



We can help!

If you are struggling to provide anything essential for your child's well-being, such as pyjamas, coats, shoes, socks, underwear, school uniform, bedding etc please ask us as we are here to help. We do not want any of our children to miss out on the basic fundamentals that they are all entitled to. As before, please just ask.

Pupil Premium Funding

Some of our families are entitled to Pupil Premium Funding for their children; this is a wonderful addition to our school's budget and helps us to provide curriculum enrichment and support for our Pupil Premium children and all other children too!

Your child may be entitled to this funding which can be used to pay for clubs, uniform, additional support, one to one sessions, Canine Assisted learning etc.

If you are in receipt of one the following benefits you may be eligible for free school meals or the pupil premium:

- 1) Income Support.
- 2) Income based Job Seeker's Allowance.
- 3) Income related Employment and Support Allowance.
- 4) Child Tax Credit - Where the family's annual income is not more than £16,190 and Working Tax Credit is not in payment.
- 5) Guarantee Pension Credit.
- 6) Support under part six of the Immigration and Asylum Act 1999.
- 7) Universal Credit.

Please contact Mrs Janes in the office to find out more or follow this link <https://www.wokingham.gov.uk/schools-and-education/school-information-and-services/free-school-meals-and-the-pupil-premium/>

And Finally,

Please remember to send your child in a coat every day as we go out in all types of weather.

Please can I politely request that you do not use your mobile phones on the school site for safeguarding reasons and because your child wants to be met with a smile not a phone.

Judy Wheeler: Headteacher